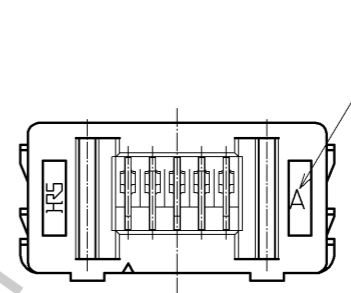
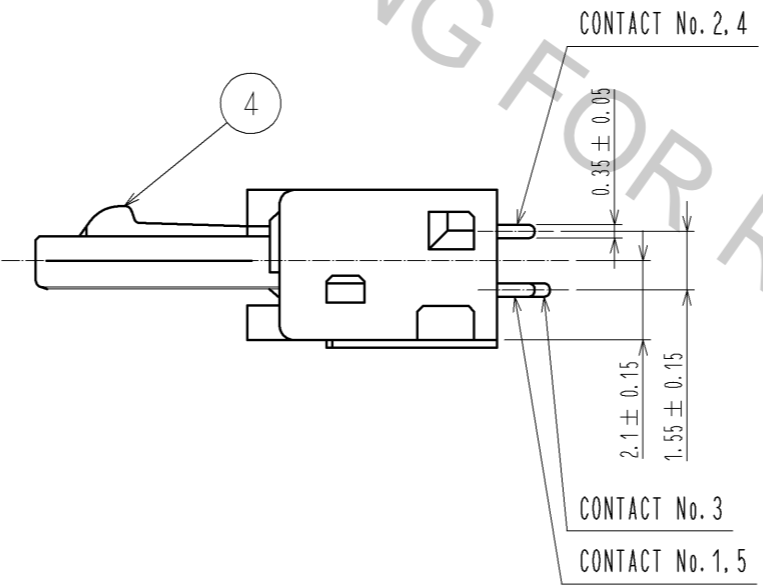
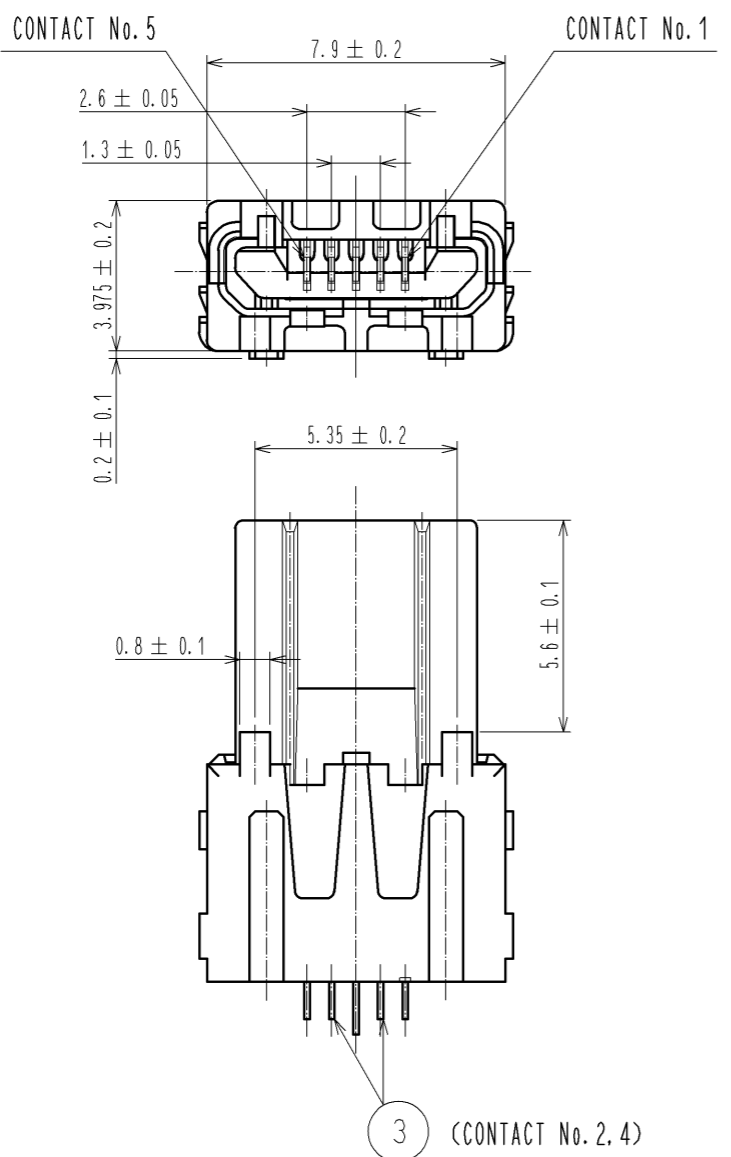
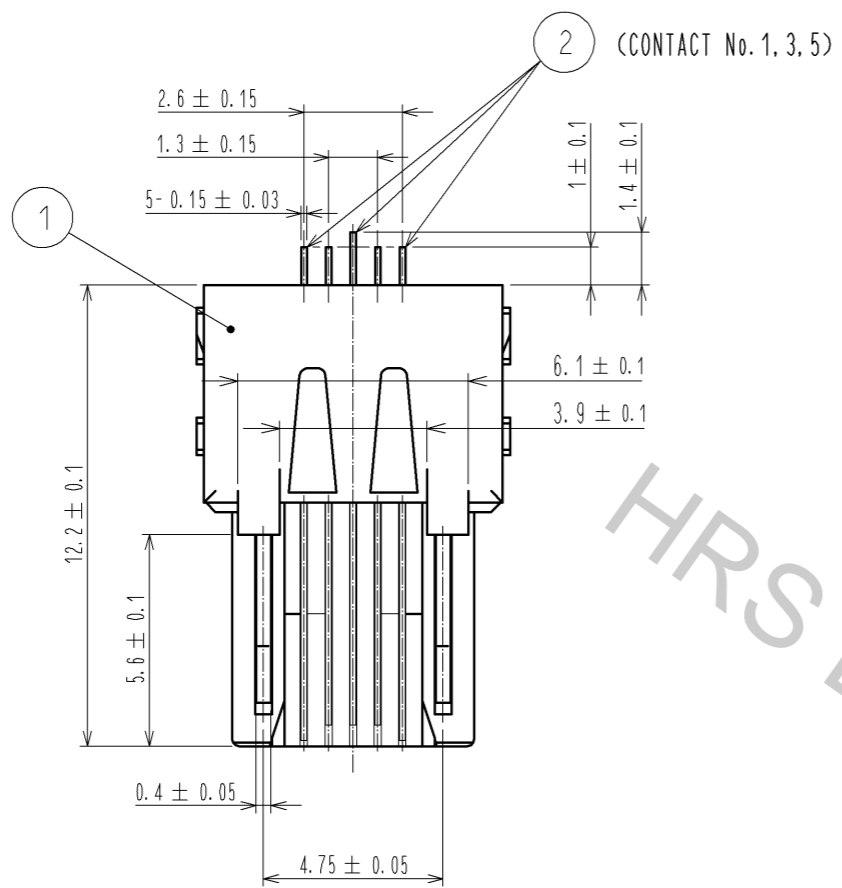


Mar.1.2016 Copyright 2016 HIROSE ELECTRIC CO., LTD. All Rights Reserved.

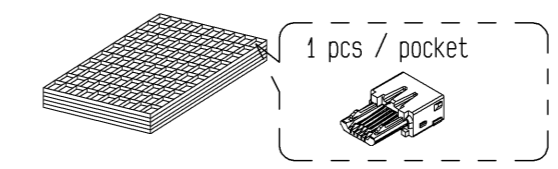


NOTES 1 PLATING
 UNDER PLATING : NICKEL 2 μm MIN.
 CONTACT AREA : GOLD 0.75 μm MIN.
 LEAD AREA : TIN 1 μm MIN.

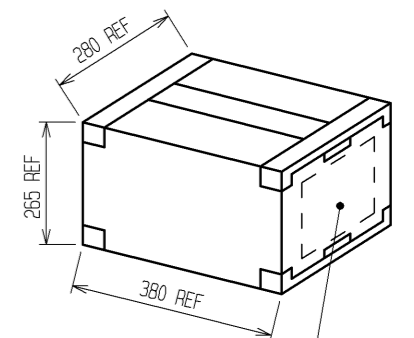
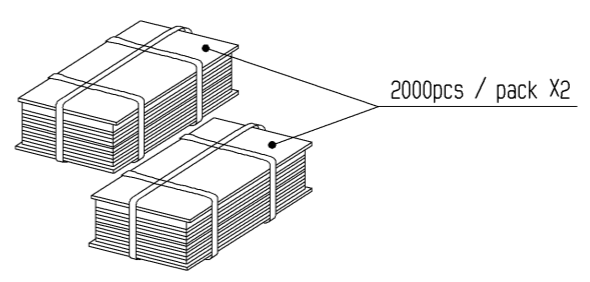
Fig - 1 PACKING SPECIFICATION -In the case of 4000 pcs-

1. STORED IN A TRAY (200pcs / tray)

3. STORED IN A CARTON BOX



2. BANDED FOR A PACK



SHOWN AS FOLLOWS:
 - Part No.
 - Code No.
 - QTY
 - Lot No.

2	COPPER ALLOY	1	4	STAINLESS STEEL			
1	LCP	UL94V-0, BLACK	3	COPPER ALLOY			
NO.	MATERIAL	FINISH, REMARKS	NO.	MATERIAL			
UNITS		SCALE	COUNT	DESCRIPTION OF REVISIONS	DESIGNED	CHECKED	DATE
mm		5 : 1	△				
APPROVED : A0. SUZUKI				08.12.08	DRAWING NO. EDC3-126085-01		
CHECKED : KN. ICHIKAWA				08.12.08	PART NO. ZX20-B-5S-UNIT(12)		
DESIGNED : TS. SAKAIZAWA				08.12.08	CODE NO. CL242-0012-8-12		
DRAWN : TS. SAKAIZAWA				08.12.08	△ 1/2		

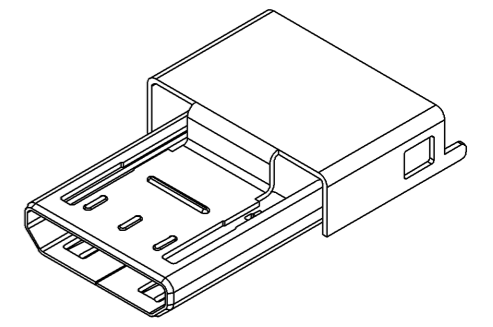
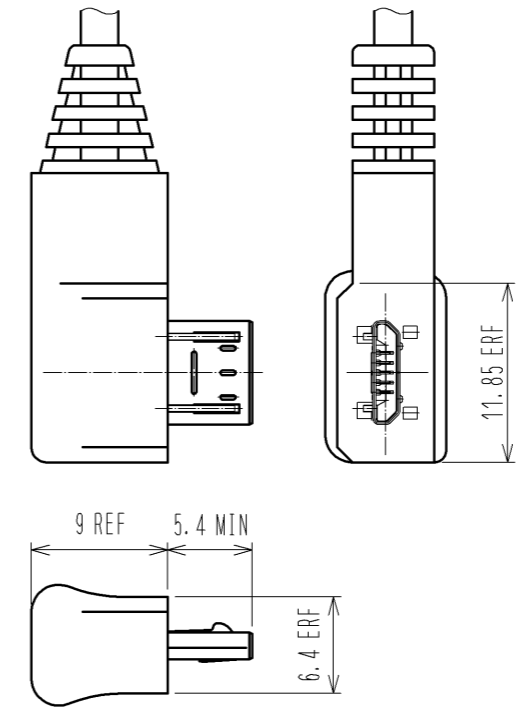
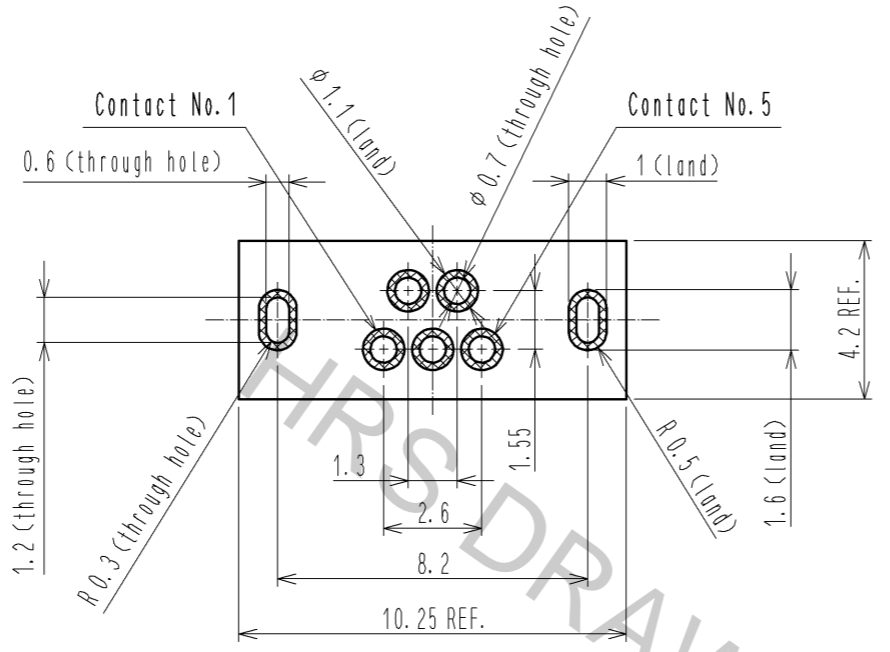
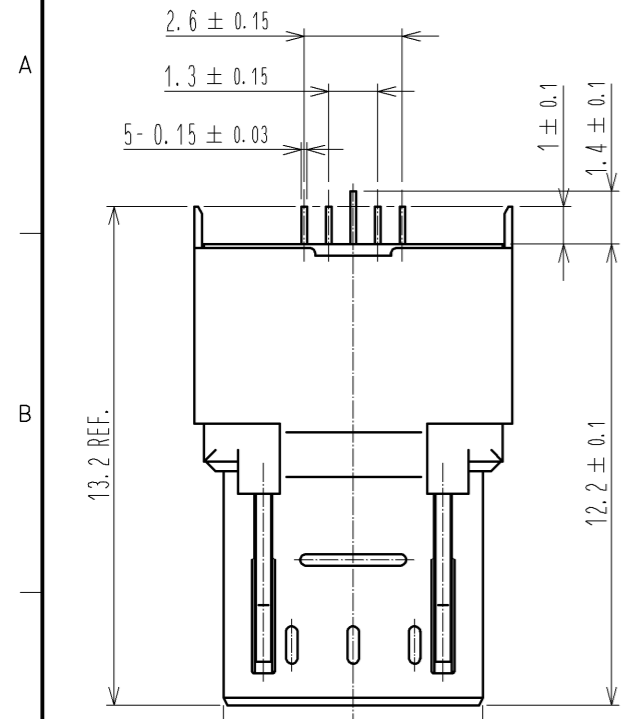
Mar.1.2016 Copyright 2016 HIROSE ELECTRIC CO., LTD. All Rights Reserved.

Fig-2 SHIELDING-PLATE ASSEMBLY

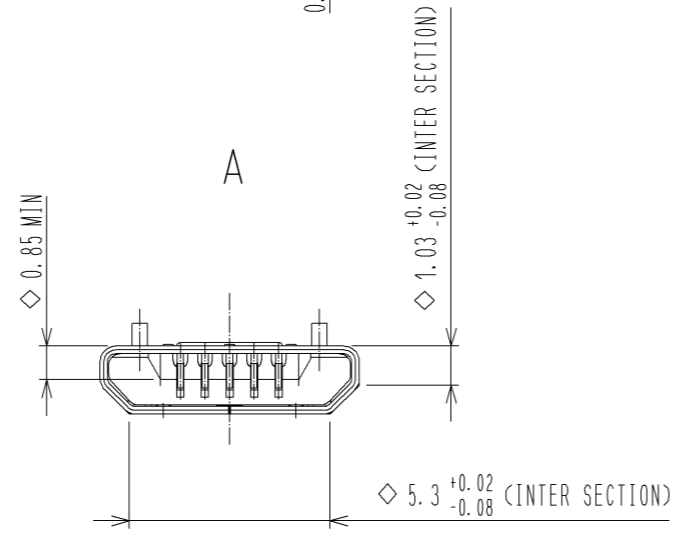
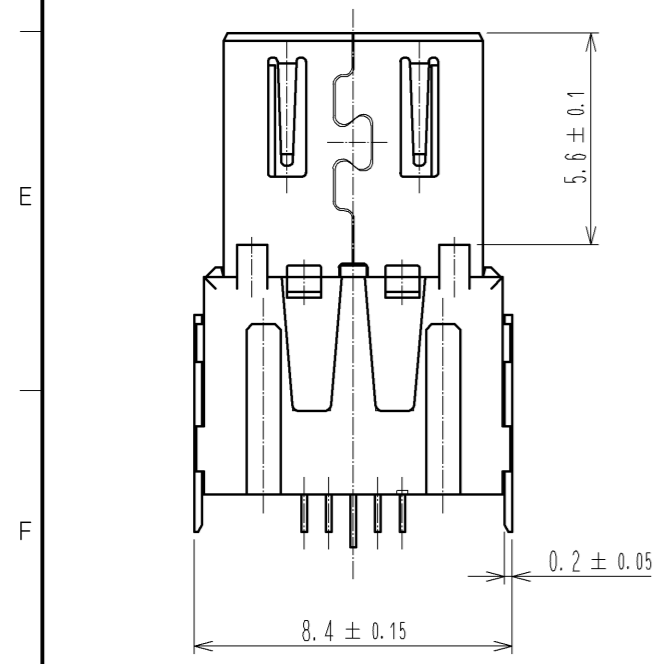
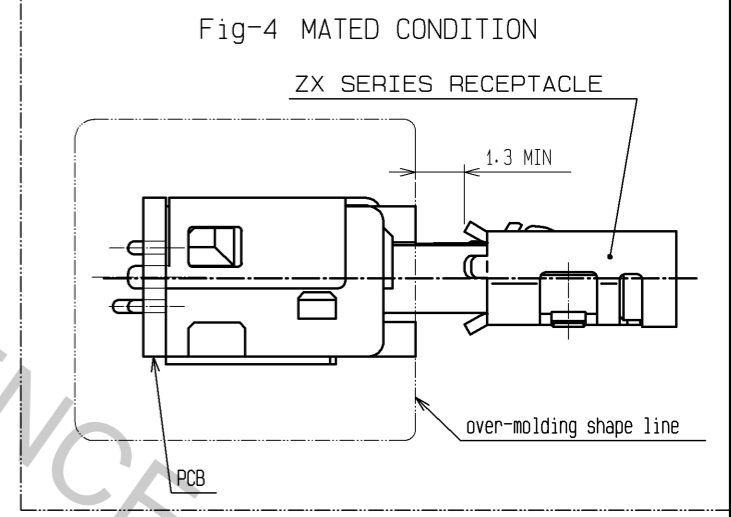
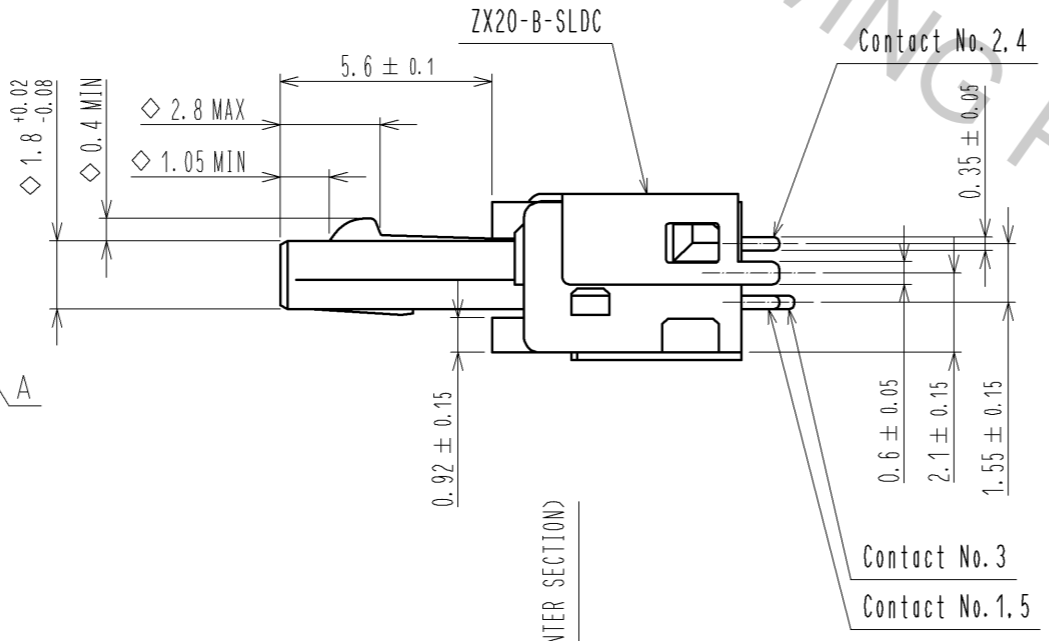
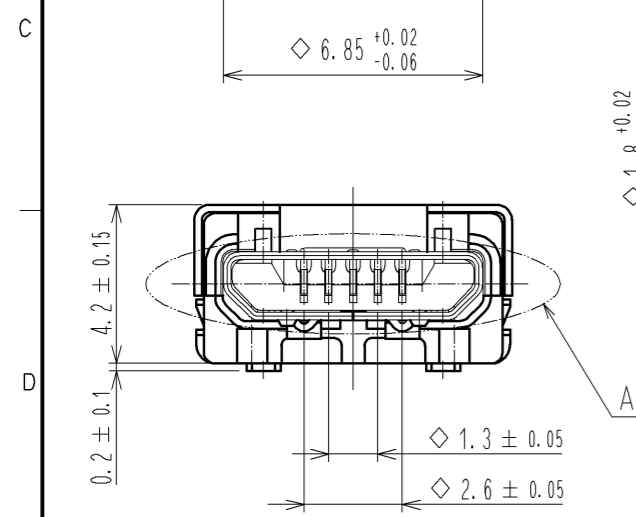
PCB LAYOUT (REFERENCE)

Fig-3 OVER-MOLDING (REFERENCE)

ZX20-B-SLDC
Code No. CL242-0022-1



NOTE:
- SOLD SEPARATELY
- DELIVERED BY THE REEL



NOTES 2 SHIELDING-PLATE, ZX20-B-SLDC, IS USED FOR ASSEMBLY.

3. *◇*SYMBOL ADDED TO EACH DIMENSION MEANS CRITICAL DIMENSION ON USB SPECIFICATION. PLEASE CHECK THEM AFTER OVER-MOLDING.

HRS	DRAWING NO.	EDC3-126085-01	2/2
	PART NO.	ZX20-B-5S-UNIT(12)	
	CODE NO.	CL242-0012-8-12	